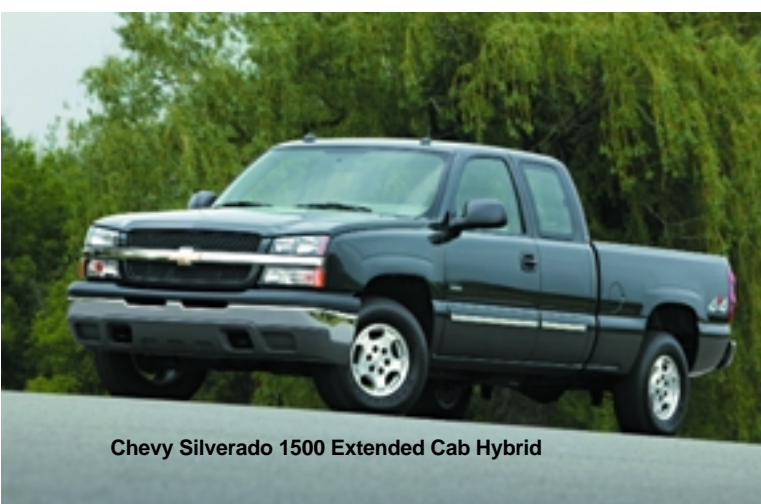


Vehicle	Engine	Tow Limit
Equinox	3.4L V6	3500
Express/Savana 1500 Passenger Van	4.3L V6	4300 (q)
Express/Savana 1500 Passenger Van Reg. Wheelbase 2WD	5.3L V8	5900 (q or s)
Express/Savana 1500 Passenger Van AWD	5.3L V8	6500 (q or s)
Express/Savana 2500 Passenger Van Reg. Wheelbase 2WD	4.3L V6	4700 (s)
Express/Savana 2500 Passenger Van Reg. Wheelbase 2WD	4.8L V8	6400 (s)
Express/Savana 2500 Passenger Van Reg. Wheelbase 2WD	4.8L V8	7400 (u)
Express/Savana 2500 Passenger Van Reg. Wheelbase 2WD	5.3L V8	6500 (s)
Express/Savana 2500 Passenger Van Reg. Wheelbase 2WD	6.0L V8	8400 (s)
Express/Savana 2500 Passenger Van Reg. Wheelbase 2WD	6.0L V8	10,000 (u)
Express/Savana 2500 Passenger Van Reg. Wheelbase AWD	5.3L V8	6400 (s)
Express/Savana 2500 Passenger Van Ext. Wheelbase 2WD	4.3L V6	4500 (s)
Express/Savana 2500 Passenger Van Ext. Wheelbase 2WD	4.8L V8	6200 (s)
Express/Savana 2500 Passenger Van Ext. Wheelbase 2WD	4.8L V8	7200 (u)
Express/Savana 2500 Passenger Van Ext. Wheelbase 2WD	5.3L V8	6400 (s)
Express/Savana 2500 Passenger Van Ext. Wheelbase 2WD	6.0L V8	8200 (s)
Express/Savana 2500 Passenger Van Ext. Wheelbase 2WD	6.0L V8	10,000 (u)
Express/Savana 3500 Passenger Van Reg. and Ext. Wheelbase	6.0L V8	8000 (s)
Express/Savana 3500 Passenger Van Reg. and Ext. Wheelbase	6.0L V8	10,000 (u)
Silverado/Sierra 1500 Reg. Cab 2WD Short Bed	4.3L V6	4900 (a,o,z)
Silverado/Sierra 1500 Reg. Cab 2WD Short Bed	4.3L V6	3900 (m,o,z)
Silverado/Sierra 1500 Reg. Cab 2WD Short Bed	4.8L V8	6300 (a,o,z)
Silverado/Sierra 1500 Reg. Cab 2WD Short Bed	4.8L V8	4300 (m,o,z)
Silverado/Sierra 1500 Reg. Cab 2WD Short Bed	4.8L V8	7300 (a,s,z)
Silverado/Sierra 1500 Reg. Cab 2WD Short Bed	4.8L V8	5300 (m,s,z)
Silverado/Sierra 1500 Reg. Cab 2WD Short Bed	5.3L V8	7300 (a,o,z)
Silverado/Sierra 1500 Reg. Cab 2WD Short Bed	5.3L V8	8300 (a,s,z)
Silverado/Sierra 1500 Reg. Cab 2WD Long Bed	4.3L V6	4800 (a,o,z)
Silverado/Sierra 1500 Reg. Cab 2WD Long Bed	4.3L V6	3800 (m,o,z)
Silverado/Sierra 1500 Reg. Cab 2WD Long Bed	4.8L V8	6200 (a,o,z)
Silverado/Sierra 1500 Reg. Cab 2WD Long Bed	4.8L V8	4200 (m,o,z)
Silverado/Sierra 1500 Reg. Cab 2WD Long Bed	4.8L V8	7200 (a,s,z)
Silverado/Sierra 1500 Reg. Cab 2WD Long Bed	4.8L V8	5200 (m,s,z)
Silverado/Sierra 1500 Reg. Cab 2WD Long Bed	5.3L V8	7200 (a,o,z)
Silverado/Sierra 1500 Reg. Cab 2WD Long Bed	5.3L V8	8200 (a,s,z)
Silverado/Sierra 1500 Ext. Cab 2WD Short Bed	4.3L V6	4600 (a,o,z)
Silverado/Sierra 1500 Ext. Cab 2WD Short Bed	4.3L V6	3600 (m,o,z)
Silverado/Sierra 1500 Ext. Cab 2WD Short Bed	4.3L V6	5100 (a,s,z)
Silverado/Sierra 1500 Ext. Cab 2WD Short Bed	4.8L V8	6000 (a,o,z)
Silverado/Sierra 1500 Ext. Cab 2WD Short Bed	4.8L V8	4000 (m,o,z)
Silverado/Sierra 1500 Ext. Cab 2WD Short Bed	4.8L V8	7000 (a,s,z)

Vehicle	Engine	Tow Limit
Silverado/Sierra 1500 Ext. Cab 2WD Short Bed	4.8L V8	5000 (m,s,z)
Silverado/Sierra 1500 Ext. Cab 2WD Short Bed	5.3L V8	7000 (a,d,o,z)
Silverado/Sierra 1500 Ext. Cab 2WD Short Bed	5.3L V8	8000 (a,d,s,z)
Silverado/Sierra 1500 Ext. Cab 2WD Long Bed	4.8L V8	5800 (a,o,z)
Silverado/Sierra 1500 Ext. Cab 2WD Long Bed	4.8L V8	3800 (m,o,z)
Silverado/Sierra 1500 Ext. Cab 2WD Long Bed	4.8L V8	6800 (a,s,z)
Silverado/Sierra 1500 Ext. Cab 2WD Long Bed	4.8L V8	4800 (m,s,z)
Silverado/Sierra 1500 Ext. Cab 2WD Long Bed	5.3L V8	6800 (a,d,o,z)
Silverado/Sierra 1500 Ext. Cab 2WD Long Bed	5.3L V8	7800 (a,d,s,z)
Silverado/Sierra 1500 Crew Cab 2WD Short Bed	6.0L V8	8200 (a,s,z)
Silverado/Sierra 1500 Crew Cab 2WD Short Bed	6.0L V8	10,200 (a,u,z)
Silverado/Sierra 1500 Reg. Cab 4WD Short Bed	4.3L V6	5100 (a,s,z)
Silverado/Sierra 1500 Reg. Cab 4WD Short Bed	4.3L V6	4100 (m,s,z)
Silverado/Sierra 1500 Reg. Cab 4WD Short Bed	4.8L V8	7000 (a,q,z)
Silverado/Sierra 1500 Reg. Cab 4WD Short Bed	4.8L V8	5000 (m,q,z)
Silverado/Sierra 1500 Reg. Cab 4WD Short Bed	4.8L V8	8000 (a,u,z)
Silverado/Sierra 1500 Reg. Cab 4WD Short Bed	4.8L V8	6000 (m,u,z)
Silverado/Sierra 1500 Reg. Cab 4WD Short Bed	5.3L V8	8000 (a,q,z)
Silverado/Sierra 1500 Reg. Cab 4WD Short Bed	5.3L V8	9000 (a,u,z)
Silverado/Sierra 1500 Reg. Cab 4WD Long Bed	4.3L V6	5000 (a,s,z)
Silverado/Sierra 1500 Reg. Cab 4WD Long Bed	4.3L V6	4000 (m,s,z)
Silverado/Sierra 1500 Reg. Cab 4WD Long Bed	4.8L V8	6900 (a,q,z)
Silverado/Sierra 1500 Reg. Cab 4WD Long Bed	4.8L V8	4900 (m,q,z)
Silverado/Sierra 1500 Reg. Cab 4WD Long Bed	4.8L V8	7900 (a,u,z)
Silverado/Sierra 1500 Reg. Cab 4WD Long Bed	4.8L V8	5900 (m,u,z)
Silverado/Sierra 1500 Reg. Cab 4WD Long Bed	5.3L V8	7900 (a,q,z)
Silverado/Sierra 1500 Reg. Cab 4WD Long Bed	5.3L V8	8900 (a,u,z)
Silverado/Sierra 1500 Ext. Cab 4WD Short Bed	4.8L V8	6700 (a,q,z)
Silverado/Sierra 1500 Ext. Cab 4WD Short Bed	4.8L V8	4700 (m,q,z)
Silverado/Sierra 1500 Ext. Cab 4WD Short Bed	4.8L V8	7700 (a,u,z)
Silverado/Sierra 1500 Ext. Cab 4WD Short Bed	4.8L V8	5700 (m,u,z)
Silverado/Sierra 1500 Ext. Cab 4WD Short Bed	5.3L V8	7700 (a,d,q,z)
Silverado/Sierra 1500 Ext. Cab 4WD Short Bed	5.3L V8	8700 (a,d,u,z)
Silverado/Sierra 1500 Ext. Cab 4WD Long Bed	4.8L V8	6600 (a,q,z)
Silverado/Sierra 1500 Ext. Cab 4WD Long Bed	4.8L V8	4600 (m,q,z)
Silverado/Sierra 1500 Ext. Cab 4WD Long Bed	4.8L V8	7600 (a,u,z)
Silverado/Sierra 1500 Ext. Cab 4WD Long Bed	4.8L V8	5600 (m,u,z)
Silverado/Sierra 1500 Ext. Cab 4WD Long Bed	5.3L V8	7600 (a,d,q,z)
Silverado/Sierra 1500 Ext. Cab 4WD Long Bed	5.3L V8	8600 (a,d,u,z)
Silverado/Sierra 1500 Crew Cab 4WD	6.0L V8	7900 (a,s,z)
Silverado/Sierra 1500 Crew Cab 4WD	6.0L V8	9900 (a,u,z)
Silverado/Sierra 2500 HD Reg. Cab 2WD Long Bed	6.0L V8	10,600 (u)
Silverado/Sierra 2500 HD Reg. Cab 2WD Long Bed	8.1L V8	12,000 (s or u)
Silverado/Sierra 2500 HD Reg. Cab 2WD Long Bed	6.6L V8 TD	12,000 (s)
Silverado/Sierra 2500 HD Ext. Cab 2WD Short Bed	6.0L V8	10,300 (u)
Silverado/Sierra 2500 HD Ext. Cab 2WD Short Bed	8.1L V8	12,000 (s or u)
Silverado/Sierra 2500 HD Ext. Cab 2WD Short Bed	6.6L V8 TD	12,000 (s)
Silverado/Sierra 2500 HD Ext. Cab 2WD Short Bed	6.0L V8	10,100 (u)
Silverado/Sierra 2500 HD Ext. Cab 2WD Long Bed	8.1L V8	12,000 (s or u)
Silverado/Sierra 2500 HD Ext. Cab 2WD Long Bed	6.6L V8 TD	12,000 (s)
Silverado/Sierra 2500 HD Crew Cab 2WD Short Bed	6.0L V8	10,100 (u)
Silverado/Sierra 2500 HD Crew Cab 2WD Short Bed	8.1L V8	12,000 (s or u)
Silverado/Sierra 2500 HD Crew Cab 2WD Short Bed	6.6L V8 TD	12,000 (s)
Silverado/Sierra 2500 HD Crew Cab 2WD Long Bed	6.0L V8	9900 (u)
Silverado/Sierra 2500 HD Crew Cab 2WD Long Bed	8.1L V8	12,000 (s or u)
Silverado/Sierra 2500 HD Crew Cab 2WD Long Bed	6.6L V8 TD	12,000 (s)
Silverado/Sierra 2500 HD Reg. Cab 4WD Long Bed	6.0L V8	10,300 (u)
Silverado/Sierra 2500 HD Reg. Cab 4WD Long Bed	8.1L V8	12,000 (s or u)
Silverado/Sierra 2500 HD Reg. Cab 4WD Long Bed	6.6L V8 TD	12,000 (s)
Silverado/Sierra 2500 HD Ext. Cab 4WD Short Bed	6.0L V8	10,000 (u)
Silverado/Sierra 2500 HD Ext. Cab 4WD Short Bed	8.1L V8	12,000 (s or u)
Silverado/Sierra 2500 HD Ext. Cab 4WD Short Bed	6.6L V8 TD	12,000 (s)
Silverado/Sierra 2500 HD Ext. Cab 4WD Short Bed	6.0L V8	9900 (u)
Silverado/Sierra 2500 HD Ext. Cab 4WD Long Bed	8.1L V8	12,000 (s or u)
Silverado/Sierra 2500 HD Ext. Cab 4WD Long Bed	6.6L V8 TD	12,000 (s)
Silverado/Sierra 2500 HD Crew Cab 4WD Short Bed	6.0L V8	9800 (u)
Silverado/Sierra 2500 HD Crew Cab 4WD Short Bed	8.1L V8	12,000 (s or u)
Silverado/Sierra 2500 HD Crew Cab 4WD Short Bed	6.6L V8 TD	12,000 (s)
Silverado/Sierra 2500 HD Crew Cab 4WD Long Bed	6.0L V8	9600 (u)
Silverado/Sierra 2500 HD Crew Cab 4WD Long Bed	8.1L V8	12,000 (s or u)
Silverado/Sierra 2500 HD Crew Cab 4WD Long Bed	6.6L V8 TD	12,000 (s)
Silverado/Sierra 3500 HD Reg. Cab 2WD Long Bed	6.0L V8	9900 (u)
Silverado/Sierra 3500 HD Reg. Cab 2WD Long Bed	8.1L V8	12,000 (u)
Silverado/Sierra 3500 HD Reg. Cab 2WD Long Bed	6.6L V8 TD	12,000 (s)
Silverado/Sierra 3500 HD Ext. Cab 2WD Long Bed	6.0L V8	9700 (u)
Silverado/Sierra 3500 HD Ext. Cab 2WD Long Bed	8.1L V8	12,000 (u)
Silverado/Sierra 3500 HD Ext. Cab 2WD Long Bed	6.6L V8 TD	12,000 (s)
Silverado/Sierra 3500 HD Crew Cab 2WD Long Bed	6.0L V8	9400 (u)
Silverado/Sierra 3500 HD Crew Cab 2WD Long Bed	8.1L V8	12,000 (u)
Silverado/Sierra 3500 HD Crew Cab 2WD Long Bed	6.6L V8 TD	12,000 (s)
Silverado/Sierra 3500 HD Reg. Cab 4WD Long Bed	6.0L V8	10,000 (u)



Chevy Silverado 1500 Extended Cab Hybrid

2005 TOW RATINGS

Vehicle	Engine	Tow Limit
Silverado/Sierra 3500 HD Reg. Cab 4WD Long Bed	8.1L V8	12,000 (u)
Silverado/Sierra 3500 HD Reg. Cab 4WD Long Bed	6.6L V8 TD	12,000 (s)
Silverado/Sierra 3500 HD Ext. Cab 4WD Long Bed	6.0L V8	9600 (u)
Silverado/Sierra 3500 HD Ext. Cab 4WD Long Bed	8.1L V8	12,000 (u)
Silverado/Sierra 3500 HD Ext. Cab 4WD Long Bed	6.6L V8 TD	12,000 (s)
Silverado/Sierra 3500 HD Crew Cab 4WD Long Bed	6.0L V8	9400 (u)
Silverado/Sierra 3500 HD Crew Cab 4WD Long Bed	8.1L V8	12,000 (u)
Silverado/Sierra 3500 HD Crew Cab 4WD Long Bed	6.6L V8 TD	12,000 (s)
Sierra Denali 1500	6.0L V8	9900
Sierra Denali 1500 SSR	6.0L V8	2500
Suburban/Yukon XL 1500 2WD	5.3L V8	7400 (q)
Suburban/Yukon XL 1500 2WD	5.3L V8	8400 (u)
Suburban/Yukon XL 1500 4WD	5.3L V8	7200 (q)
Suburban/Yukon XL 1500 4WD	5.3L V8	8200 (u)
Suburban/Yukon XL 2500 2WD	6.0L V8	7900 (s)
Suburban/Yukon XL 2500 2WD	6.0L V8	9900 (u)
Suburban/Yukon XL 2500 2WD	8.1L V8	10,600 (s)
Suburban/Yukon XL 2500 2WD	8.1L V8	12,000 (u)
Suburban/Yukon XL 2500 4WD	6.0L V8	7600 (s)
Suburban/Yukon XL 2500 4WD	6.0L V8	9600 (u)
Suburban/Yukon XL 2500 4WD	8.1L V8	10,300 (s)
Suburban/Yukon XL 2500 4WD	8.1L V8	12,000 (u)
Yukon XL 2500 Quadrasteer 2WD	6.0L V8	9700
Yukon XL 2500 Quadrasteer 4WD	6.0L V8	9400
Tahoe/Yukon 2WD	4.8L V8	5700 (o)
Tahoe/Yukon 2WD	4.8L V8	6700 (s)
Tahoe/Yukon 2WD	5.3L V8	6700 (o)
Tahoe/Yukon 2WD	5.3L V8	7700 (s)
Tahoe/Yukon 4WD	4.8L V8	6500 (q)
Tahoe/Yukon 4WD	4.8L V8	7500 (u)
Tahoe/Yukon 4WD	5.3L V8	7500 (q)
Tahoe/Yukon 4WD	5.3L V8	7800 (u)
Yukon Denali AWD	6.0L V8	8100 (s)
Yukon XL Denali AWD	6.0L V8	7900 (s)
TrailBlazer/Envoy 2WD	4.2L I6	5300 (q)
TrailBlazer/Envoy 2WD	4.2L I6	5800 (s)
TrailBlazer/Envoy 2WD	4.2L I6	6300 (u)
TrailBlazer/Envoy 4WD	4.2L I6	5100 (q)
TrailBlazer/Envoy 4WD	4.2L I6	5600 (s)
TrailBlazer/Envoy 4WD	4.2L I6	6100 (u)
TrailBlazer EXT/Envoy XL 2WD	4.2L I6	5000 (q)
TrailBlazer EXT/Envoy XL 2WD	4.2L I6	5500 (s)
TrailBlazer EXT/Envoy XL 2WD	4.2L I6	6000 (u)
TrailBlazer EXT/Envoy XL 2WD	5.3L V8	5900 (q)
TrailBlazer EXT/Envoy XL 2WD	5.3L V8	7000 (s)
TrailBlazer EXT/Envoy XL 4WD	4.2L I6	4800 (q)
TrailBlazer EXT/Envoy XL 4WD	4.2L I6	5800 (u)
TrailBlazer EXT/Envoy XL 4WD	5.3L V8	5700 (q)
TrailBlazer EXT/Envoy XL 4WD	5.3L V8	6500 (s)
Envoy XUV 2WD	4.2L I6	4800 (q)
Envoy XUV 2WD	4.2L I6	5300 (s)
Envoy XUV 2WD	4.2L I6	5800 (u)
Envoy XUV 2WD	5.3L V8	5800 (q)
Envoy XUV 2WD	5.3L V8	5900 (s)
Envoy XUV 4WD	4.2L I6	4700 (q)
Envoy XUV 4WD	4.2L I6	5200 (s)
Envoy XUV 4WD	4.2L I6	5700 (u)
Envoy XUV 4WD	5.3L V8	5600 (q)



Dodge Dakota Club Cab

STUART BOURDON

Vehicle	Engine	Tow Limit
Envoy XUV 4WD	5.3L V8	5700 (s)
Uplander	3.5L V6	3500 (z)
Venture	3.4L V6	3500
CHRYSLER		
Town & Country	3.3L V6	3800 (z)
Town & Country	3.8L V6	3800 (z)
Pacifica	3.8L V6	3500
DODGE CARS		
Caravan/Grand Caravan	3.3L V6	3800 (z)
Caravan/Grand Caravan	3.8L V6	3800 (z)
Caravan/Grand Caravan AWD	3.8L V6	3500 (z)
DODGE TRUCK		
Dakota Club Cab 2WD	3.7L V6	3250 (m,n)
Dakota Club Cab 2WD	3.7L V6	4050 (m,r)
Dakota Club Cab 2WD	3.7L V6	4550 (a,r)
Dakota Club Cab 2WD	3.7L V6	4850 (a,t)
Dakota Club Cab 2WD	4.7L V8	5000 (m,n)
Dakota Club Cab 2WD	4.7L V8	5500 (m,r)
Dakota Club Cab 2WD	4.7L V8	5950 (a,r)
Dakota Club Cab 2WD	4.7L V8	7150 (a,t)
Dakota Club Cab 4WD	3.7L V6	3850 (m,r)
Dakota Club Cab 4WD	3.7L V6	4400 (a,r)
Dakota Club Cab 4WD	3.7L V6	4700 (a,t)
Dakota Club Cab 4WD	4.7L V8	5300 (m,r)
Dakota Club Cab 4WD	4.7L V8	5750 (a,r)
Dakota Club Cab 4WD	4.7L V8	6950 (a,t)
Dakota Quad Cab 2WD	3.7L V6	3150 (m,n)
Dakota Quad Cab 2WD	3.7L V6	3950 (m,r)
Dakota Quad Cab 2WD	3.7L V6	4450 (a,r)
Dakota Quad Cab 2WD	3.7L V6	4750 (a,t)
Dakota Quad Cab 2WD	4.7L V8	4850 (m,n)
Dakota Quad Cab 2WD	4.7L V8	5350 (m,r)
Dakota Quad Cab 2WD	4.7L V8	5800 (a,r)
Dakota Quad Cab 2WD	4.7L V8	7000 (a,t)
Dakota Quad Cab 4WD	3.7L V6	3850 (m,r)
Dakota Quad Cab 4WD	3.7L V6	4400 (a,r)
Dakota Quad Cab 4WD	3.7L V6	4700 (a,t)
Dakota Quad Cab 4WD	4.7L V8	5300 (m,r)
Dakota Quad Cab 4WD	4.7L V8	5750 (a,r)
Dakota Quad Cab 4WD	4.7L V8	6950 (a,t)
Durango SLT 2WD	3.7L V6	3650 (a,t)
Durango SLT 2WD	4.7L V8	5900 (a,r)
Durango SLT 2WD	4.7L V8	7400 (a,t)
Durango SLT 2WD	5.7L V8	7350 (a,r)
Durango SLT 2WD	5.7L V8	8950 (a,t)
Durango SLT 4WD	4.7L V8	5700 (a,r)
Durango SLT 4WD	4.7L V8	7200 (a,t)
Durango SLT 4WD	5.7L V8	7150 (a,r)
Magnum	3.5L V6	2000
Magnum	5.7L V8	3800 (z)
Ram 1500 Reg. Cab 2WD Short Bed	3.7L V6	3400 (m,n or r)
Ram 1500 Reg. Cab 2WD Short Bed	3.7L V6	3800 (a,r or t)
Ram 1500 Reg. Cab 2WD Short Bed	4.7L V8	4350 (m,n)
Ram 1500 Reg. Cab 2WD Short Bed	4.7L V8	5850 (m,t)
Ram 1500 Reg. Cab 2WD Short Bed	4.7L V8	6750 (a,r)
Ram 1500 Reg. Cab 2WD Short Bed	4.7L V8	7750 (a,t)
Ram 1500 Reg. Cab 2WD Short Bed	5.7L V8	8250 (a,r)
Ram 1500 Reg. Cab 2WD Short Bed	5.7L V8	9250 (a,t)
Ram 1500 Reg. Cab 2WD Long Bed	3.7L V6	3200 (m,n or r)
Ram 1500 Reg. Cab 2WD Long Bed	3.7L V6	3650 (a,r or t)
Ram 1500 Reg. Cab 2WD Long Bed	4.7L V8	4150 (m,n)
Ram 1500 Reg. Cab 2WD Long Bed	4.7L V8	5650 (m,t)
Ram 1500 Reg. Cab 2WD Long Bed	4.7L V8	6550 (a,r)
Ram 1500 Reg. Cab 2WD Long Bed	4.7L V8	7550 (a,t)
Ram 1500 Reg. Cab 2WD Long Bed	5.7L V8	8050 (a,r)
Ram 1500 Reg. Cab 2WD Long Bed	5.7L V8	9500 (a,t)
Ram 1500 Reg. Cab 4WD Short Bed	4.7L V8	3950 (m,r)
Ram 1500 Reg. Cab 4WD Short Bed	4.7L V8	5450 (m,t)
Ram 1500 Reg. Cab 4WD Short Bed	4.7L V8	6400 (a,r)
Ram 1500 Reg. Cab 4WD Short Bed	4.7L V8	7400 (a,t)
Ram 1500 Reg. Cab 4WD Short Bed	5.7L V8	7850 (a,r)
Ram 1500 Reg. Cab 4WD Short Bed	5.7L V8	8850 (a,t)
Ram 1500 Reg. Cab 4WD Long Bed	4.7L V8	3850 (m,r)
Ram 1500 Reg. Cab 4WD Long Bed	4.7L V8	5350 (m,t)
Ram 1500 Reg. Cab 4WD Long Bed	4.7L V8	6300 (a,r)
Ram 1500 Reg. Cab 4WD Long Bed	4.7L V8	7300 (a,t)
Ram 1500 Reg. Cab 4WD Long Bed	5.7L V8	7750 (a,r)
Ram 1500 Reg. Cab 4WD Long Bed	5.7L V8	8750 (a,t)
Ram 1500 Quad Cab 2WD Short Bed	3.7L V6	3100 (m,n or r)
Ram 1500 Quad Cab 2WD Short Bed	3.7L V6	3550 (a,r)

2005 TOW RATINGS

PRESENTED BY TRAILER BOATS AND BAYLINER

Vehicle	Engine	Tow Limit
Ram 1500 Quad Cab 2WD Short Bed	4.7L V8	4000 (m,n)
Ram 1500 Quad Cab 2WD Short Bed	4.7L V8	5500 (m,r)
Ram 1500 Quad Cab 2WD Short Bed	4.7L V8	6400 (a,r)
Ram 1500 Quad Cab 2WD Short Bed	4.7L V8	7400 (a,t)
Ram 1500 Quad Cab 2WD Short Bed	5.7L V8	7900 (a,r)
Ram 1500 Quad Cab 2WD Short Bed	5.7L V8	8900 (a,t)
Ram 1500 Quad Cab 2WD Long Bed	4.7L V8	3800 (m,n)
Ram 1500 Quad Cab 2WD Long Bed	4.7L V8	5300 (m,r)
Ram 1500 Quad Cab 2WD Long Bed	4.7L V8	6250 (a,r)
Ram 1500 Quad Cab 2WD Long Bed	4.7L V8	7250 (a,t)
Ram 1500 Quad Cab 2WD Long Bed	5.7L V8	7700 (a,r)
Ram 1500 Quad Cab 2WD Long Bed	5.7L V8	8700 (a,t)
Ram 1500 Quad Cab 4WD Short Bed	4.7L V8	3750 (m,r)
Ram 1500 Quad Cab 4WD Short Bed	4.7L V8	5250 (m,t)
Ram 1500 Quad Cab 4WD Short Bed	4.7L V8	6150 (a,r)
Ram 1500 Quad Cab 4WD Short Bed	4.7L V8	7150 (a,t)
Ram 1500 Quad Cab 4WD Short Bed	5.7L V8	7600 (a,r)
Ram 1500 Quad Cab 4WD Short Bed	5.7L V8	8600 (a,t)
Ram 1500 Quad Cab 4WD Long Bed	4.7L V8	3450 (m,r)
Ram 1500 Quad Cab 4WD Long Bed	4.7L V8	4950 (m,t)
Ram 1500 Quad Cab 4WD Long Bed	4.7L V8	5900 (a,r)
Ram 1500 Quad Cab 4WD Long Bed	4.7L V8	6900 (a,t)
Ram 1500 Quad Cab 4WD Long Bed	5.7L V8	7400 (a,r)
Ram 1500 Quad Cab 4WD Long Bed	5.7L V8	8400 (a,t)
Ram HD 2500 Reg. Cab 2WD Long Bed	5.7L V8	11,400 (m,u)
Ram HD 2500 Reg. Cab 2WD Long Bed	5.7L V8	11,450 (a,u)
Ram HD 2500 Reg. Cab 2WD Long Bed	5.9L 24V TDHO	13,450 (m,u)
Ram HD 2500 Reg. Cab 2WD Long Bed	5.9L 24V TDHO	13,600 (a,u)
Ram HD 2500 Reg. Cab 4WD Long Bed	5.7L V8	11,000 (m or a,u)
Ram HD 2500 Reg. Cab 4WD Long Bed	5.9L 24V TDHO	13,000 (m,u)
Ram HD 2500 Reg. Cab 4WD Long Bed	5.9L 24V TDHO	13,200 (a,u)
Ram 2500 Quad Cab 2WD Short Bed	5.7L V8	11,150 (m,u)
Ram 2500 Quad Cab 2WD Short Bed	5.7L V8	11,200 (a,u)
Ram 2500 Quad Cab 2WD Short Bed	5.9L 24V TDHO	13,250 (m,u)
Ram 2500 Quad Cab 2WD Short Bed	5.9L 24V TDHO	13,400 (a,u)
Ram 2500 Quad Cab 2WD Long Bed	5.7L V8	11,050 (m,u)
Ram 2500 Quad Cab 2WD Long Bed	5.7L V8	11,100 (a,u)
Ram 2500 Quad Cab 2WD Long Bed	5.9L 24V TDHO	13,150 (m,u)
Ram 2500 Quad Cab 2WD Long Bed	5.9L 24V TDHO	13,300 (a,u)
Ram 2500 Quad Cab 4WD Short Bed	5.7L V8	10,750 (m,u)
Ram 2500 Quad Cab 4WD Short Bed	5.7L V8	10,800 (a,u)
Ram 2500 Quad Cab 4WD Short Bed	5.9L 24V TDHO	12,900 (m,u)
Ram 2500 Quad Cab 4WD Short Bed	5.9L 24V TDHO	13,100 (a,u)
Ram 2500 Quad Cab 4WD Long Bed	5.7L V8	10,650 (m,u)
Ram 2500 Quad Cab 4WD Long Bed	5.7L V8	10,700 (a,u)
Ram 2500 Quad Cab 4WD Long Bed	5.9L 24V TDHO	12,700 (m,u)
Ram 2500 Quad Cab 4WD Long Bed	5.9L 24V TDHO	12,900 (a,u)
Ram 3500 Reg. Cab 2WD Dually Long Bed	5.7L V8	10,900 (m,u)
Ram 3500 Reg. Cab 2WD Dually Long Bed	5.7L V8	10,950 (a,u)
Ram 3500 Reg. Cab 2WD Dually Long Bed	5.9L 24V TDHO	16,150 (m,u)
Ram 3500 Reg. Cab 2WD Dually Long Bed	5.9L 24V TDHO	16,250 (a,u)
Ram 3500 Reg. Cab 4WD Dually Long Bed	5.7L V8	10,400 (m,u)
Ram 3500 Reg. Cab 4WD Dually Long Bed	5.7L V8	10,450 (a,u)
Ram 3500 Reg. Cab 4WD Dually Long Bed	5.9L 24V TDHO	15,650 (m,u)
Ram 3500 Reg. Cab 4WD Dually Long Bed	5.9L 24V TDHO	15,850 (a,u)
Ram 3500 Quad Cab 2WD Short Bed	5.9L 24V TDHO	16,200 (m,u)
Ram 3500 Quad Cab 2WD Short Bed	5.9L 24V TDHO	16,350 (a,u)
Ram 3500 Quad Cab 2WD Dually Long Bed	5.7L V8	10,550 (m or a,u)
Ram 3500 Quad Cab 2WD Dually Long Bed	5.9L 24V TDHO	15,800 (m,u)
Ram 3500 Quad Cab 2WD Dually Long Bed	5.9L 24V TDHO	15,900 (a,u)
Ram 3500 Quad Cab 4WD	5.9L 24V TDHO	15,750 (m,u)
Ram 3500 Quad Cab 4WD	5.9L 24V TDHO	15,950 (a,u)
Ram 3500 Quad Cab 4WD Dually Long Bed	5.7L V8	10,050 (m,u)
Ram 3500 Quad Cab 4WD Dually Long Bed	5.7L V8	10,100 (a,u)
Ram 3500 Quad Cab 4WD Dually Long Bed	5.9L 24V TDHO	15,300 (m,u)
Ram 3500 Quad Cab 4WD Dually Long Bed	5.9L 24V TDHO	15,500 (a,u)
Power Wagon Reg. Cab 4WD	5.7L V8	11,000 (m or a,u)
Power Wagon Quad Cab 4WD	5.7L V8	10,750 (m or a,u)

FORD TRUCK

Ranger Reg. Cab 2WD	2.3L I4	2260 (a,u)
Ranger Reg. Cab 2WD	3.0L V6	2640 (m,s)
Ranger Reg. Cab 2WD	3.0L V6	2600 (a,s)
Ranger Reg. Cab 2WD	3.0L V6	2500 (m,u)
Ranger Reg. Cab 2WD	3.0L V6	3460 (a,u)
Ranger Reg. Cab 2WD	4.0L V6	5980 (a,r)
Ranger Reg. Cab 4WD	3.0L V6	2340 (m,u)
Ranger Reg. Cab 4WD	3.0L V6	2300 (a,s)

Vehicle	Engine	Tow Limit
Ranger Reg. Cab 4WD	4.0L V6	3220 (m,u)
Ranger Reg. Cab 4WD	4.0L V6	5660 (a,s)
Ranger SuperCab 2WD	3.0L V6	2460 (m,s)
Ranger SuperCab 2WD	3.0L V6	2420 (a,s)
Ranger SuperCab 2WD	3.0L V6	2360 (m,u)
Ranger SuperCab 2WD	3.0L V6	2300 (a,u)
Ranger SuperCab 2WD	4.0L V6	3400 (m,r)
Ranger SuperCab 2WD	4.0L V6	5860 (a,r)
Ranger SuperCab 4WD	4.0L V6	3100 (m,u)
Ranger SuperCab 4WD	4.0L V6	5580 (a,s or u)
F-150 Reg. Cab 2WD Short Bed	4.2L V6	2400 (m,p)
F-150 Reg. Cab 2WD Short Bed	4.2L V6	3700 (m,r)
F-150 Reg. Cab 2WD Short Bed	4.2L V6	5100 (a,r)
F-150 Reg. Cab 2WD Short Bed	4.2L V6	5600 (a,s)
F-150 Reg. Cab 2WD Short Bed	4.6L V8	6500 (a,r)
F-150 Reg. Cab 2WD Short Bed	4.6L V8	7000 (a,s)
F-150 Reg. Cab 2WD Short Bed	5.4L V8	6900 (a,p)
F-150 Reg. Cab 2WD Short Bed	5.4L V8	7900 (a,r)
F-150 Reg. Cab 2WD Short Bed	5.4L V8	8400 (a,s)
F-150 Reg. Cab 2WD Long Bed	4.2L V6	2200 (m,p)
F-150 Reg. Cab 2WD Long Bed	4.2L V6	3500 (m,r)
F-150 Reg. Cab 2WD Long Bed	4.2L V6	5000 (a,r)
F-150 Reg. Cab 2WD Long Bed	4.2L V6	5500 (a,s)
F-150 Reg. Cab 2WD Long Bed	4.6L V8	6600 (a,r)
F-150 Reg. Cab 2WD Long Bed	4.6L V8	7100 (a,s)
F-150 Reg. Cab 2WD Long Bed	5.4L V8	7300 (a,p)
F-150 Reg. Cab 2WD Long Bed	5.4L V8	8800 (a,r)
F-150 Reg. Cab 2WD Long Bed	5.4L V8	9800 (a,s)
F-150 Reg. Cab 2WD Long Bed	5.4L V8	9900 (a,u)
F-150 Reg. Cab 4WD Short Bed	4.6L V8	6200 (a,r)
F-150 Reg. Cab 4WD Short Bed	4.6L V8	6700 (a,s)
F-150 Reg. Cab 4WD Short Bed	5.4L V8	7600 (a,r)
F-150 Reg. Cab 4WD Short Bed	5.4L V8	8100 (a,s)
F-150 Reg. Cab 4WD Long Bed	4.6L V8	6300 (a,r)
F-150 Reg. Cab 4WD Long Bed	4.6L V8	6800 (a,s)
F-150 Reg. Cab 4WD Long Bed	5.4L V8	8500 (a,r)
F-150 Reg. Cab 4WD Long Bed	5.4L V8	9500 (a,s or u)
F-150 SuperCab 2WD 5.5' Bed	4.6L V8	6300 (a,r)
F-150 SuperCab 2WD 5.5' Bed	4.6L V8	6800 (a,s)
F-150 SuperCab 2WD 5.5' Bed	5.4L V8	7600 (a,r)
F-150 SuperCab 2WD 5.5' Bed	5.4L V8	8100 (a,s)
F-150 SuperCab 2WD 6.5' Bed	4.6L V8	6400 (a,r)
F-150 SuperCab 2WD 6.5' Bed	4.6L V8	6900 (a,s)
F-150 SuperCab 2WD 6.5' Bed	5.4L V8	8600 (a,r)
F-150 SuperCab 2WD 6.5' Bed	5.4L V8	9500 (a,s)
F-150 SuperCab 2WD Long Bed	5.4L V8	9500 (a,u)
F-150 SuperCab 4WD 5.5' Bed	4.6L V8	6000 (a,r)
F-150 SuperCab 4WD 5.5' Bed	4.6L V8	6500 (a,s)
F-150 SuperCab 4WD 5.5' Bed	5.4L V8	7300 (a,r)
F-150 SuperCab 4WD 5.5' Bed	5.4L V8	7800 (a,s)
F-150 SuperCab 4WD 6.5' Bed	4.6L V8	6100 (a,r)
F-150 SuperCab 4WD 6.5' Bed	4.6L V8	6500 (a,s)
F-150 SuperCab 4WD 6.5' Bed	5.4L V8	8300 (a,r)
F-150 SuperCab 4WD 6.5' Bed	5.4L V8	9300 (a,s)
F-150 SuperCab 4WD Long Bed	5.4L V8	9300 (a,u)
F-150 SuperCrew 2WD	4.6L V8	6300 (a,r)
F-150 SuperCrew 2WD	4.6L V8	6800 (a,s)
F-150 SuperCrew 2WD	5.4L V8	8500 (a,r)
F-150 SuperCrew 2WD	5.4L V8	9500 (a,s)
F-150 SuperCrew 4WD	4.6L V8	6500 (a,s)



Ford Expedition

2005 TOW RATINGS

PRESENTED BY TRAILER BOATS AND BAYLINER

Vehicle	Engine	Tow Limit
F-150 SuperCrew 4WD	5.4L V8	8200 (a,r)
F-150 SuperCrew 4WD	5.4L V8	9200 (a,s)
F-150 SVT Lightning	5.4L V8	5000
F-250/F-350 Super Duty Reg. Cab 2WD	5.4L V8	9000 (m,s)
F-250/F-350 Super Duty Reg. Cab 2WD	5.4L V8	10,000 (a,s)
F-250/F-350 Super Duty Reg. Cab 2WD	5.4L V8	11,000 (m,u)
F-250/F-350 Super Duty Reg. Cab 2WD	5.4L V8	12,000 (a,u)
F-250/F-350 Super Duty Reg. Cab 2WD	6.8L V10	12,500 (a or m,s)
F-250/F-350 Super Duty Reg. Cab 2WD	6.0L V8 TD	12,500 (a or m,s)
F-250/F-350 Super Duty Reg. Cab 4WD	5.4L V8	8600 (m,s)
F-250/F-350 Super Duty Reg. Cab 4WD	5.4L V8	9600 (a,s)
F-250/F-350 Super Duty Reg. Cab 4WD	5.4L V8	10,600 (m,u)
F-250/F-350 Super Duty Reg. Cab 4WD	5.4L V8	11,600 (a,u)
F-250/F-350 Super Duty Reg. Cab 4WD	6.8L V10	12,500 (a or m,u)
F-250/F-350 Super Duty Reg. Cab 4WD	6.0L V8 TD	12,500 (a or m,s)
F-250/F-350 Super Duty SuperCab 2WD	5.4L V8	8700 (m,s)
F-250/F-350 Super Duty SuperCab 2WD	5.4L V8	9700 (a,s)
F-250/F-350 Super Duty SuperCab 2WD	5.4L V8	10,700 (m,u)
F-250/F-350 Super Duty SuperCab 2WD	5.4L V8	11,700 (a,u)
F-250/F-350 Super Duty SuperCab 2WD	6.8L V10	12,500 (a or m,u)
F-250/F-350 Super Duty SuperCab 2WD	6.0L V8 TD	12,500 (a or m,s)
F-250/F-350 Super Duty SuperCab 4WD	5.4L V8	8200 (m,s)
F-250/F-350 Super Duty SuperCab 4WD	5.4L V8	9200 (a,s)
F-250/F-350 Super Duty SuperCab 4WD	5.4L V8	10,200 (m,u)
F-250/F-350 Super Duty SuperCab 4WD	5.4L V8	11,200 (a,u)
F-250/F-350 Super Duty SuperCab 4WD	6.8L V10	12,500 (a or m,u)
F-250/F-350 Super Duty SuperCab 4WD	6.0L V8 TD	12,500 (a or m,s)
F-250/F-350 Super Duty Crew Cab 2WD	5.4L V8	8500 (m,s)
F-250/F-350 Super Duty Crew Cab 2WD	5.4L V8	9500 (a,s)
F-250/F-350 Super Duty Crew Cab 2WD	5.4L V8	10,500 (m,u)
F-250/F-350 Super Duty Crew Cab 2WD	5.4L V8	11,500 (a,u)
F-250/F-350 Super Duty Crew Cab 2WD	6.8L V10	12,500 (a or m,u)
F-250/F-350 Super Duty Crew Cab 2WD	6.0L V8 TD	12,500 (a or m,s)
F-250/F-350 Super Duty Crew Cab 4WD	5.4L V8	8000 (m,s)
F-250/F-350 Super Duty Crew Cab 4WD	5.4L V8	9000 (a,s)
F-250/F-350 Super Duty Crew Cab 4WD	5.4L V8	10,000 (m,u)
F-250/F-350 Super Duty Crew Cab 4WD	5.4L V8	11,000 (a,u)
F-250/F-350 Super Duty Crew Cab 4WD	6.8L V10	12,500 (a or m,u)
F-250/F-350 Super Duty Crew Cab 4WD	6.0L V8 TD	12,500 (a or m,s)
F-350 Super Duty Reg. Cab 2WD Dually	5.4L V8	11,300 (m,u)
F-350 Super Duty Reg. Cab 2WD Dually	5.4L V8	12,300 (a,u)
F-350 Super Duty Reg. Cab 2WD Dually	6.8L V10	14,100 (m,u)
F-350 Super Duty Reg. Cab 2WD Dually	6.8L V10	15,000 (a,u)
F-350 Super Duty Reg. Cab 2WD Dually	6.0L V8 TD	15,000 (a or m,s or u)
F-350 Super Duty Reg. Cab 4WD Dually	5.4L V8	10,800 (m,u)
F-350 Super Duty Reg. Cab 4WD Dually	5.4L V8	11,800 (a,u)
F-350 Super Duty Reg. Cab 4WD Dually	6.8L V10	13,700 (m,u)
F-350 Super Duty Reg. Cab 4WD Dually	6.8L V10	14,700 (a,u)
F-350 Super Duty Reg. Cab 4WD Dually	6.0L V8 TD	15,000 (a or m, s or u)
F-350 Super Duty SuperCab 2WD Dually	5.4L V8	10,900 (m,u)
F-350 Super Duty SuperCab 2WD Dually	5.4L V8	11,900 (a,u)
F-350 Super Duty SuperCab 2WD Dually	6.8L V10	13,800 (m,u)
F-350 Super Duty SuperCab 2WD Dually	6.8L V10	14,800 (m,u)
F-350 Super Duty SuperCab 2WD Dually	6.0L V8 TD	15,000 (a or m, s or u)
F-350 Super Duty SuperCab 4WD Dually	5.4L V8	10,500 (m,u)
F-350 Super Duty SuperCab 4WD Dually	5.4L V8	11,400 (a,u)
F-350 Super Duty SuperCab 4WD Dually	6.8L V10	13,300 (m,u)
F-350 Super Duty SuperCab 4WD Dually	6.8L V10	14,400 (a,u)
F-350 Super Duty SuperCab 4WD Dually	6.0L V8 TD	15,000 (a or m, s or u)
F-350 Super Duty Crew Cab 2WD Dually	6.8L V10	13,600 (m,u)
F-350 Super Duty Crew Cab 2WD Dually	6.8L V10	14,600 (a,u)
F-350 Super Duty Crew Cab 2WD Dually	6.0L V8 TD	12,800 (a or m,u)
F-350 Super Duty Crew Cab 4WD Dually	6.8L V10	13,100 (m,u)
F-350 Super Duty Crew Cab 4WD Dually	6.8L V10	14,100 (a,u)
F-350 Super Duty Crew Cab 4WD Dually	6.0L V8 TD	15,000 (a or m, s or u)
Escape 2WD/4WD	3.0L V6	3500 (z)
Explorer 2WD	4.0L V6	5760 (s,z)
Explorer 2WD	4.6L V8	7140 (s,z)
Explorer 4WD	4.0L V6	5380 (s,z)
Explorer 4WD	4.0L V6	7000 (s,z)
Explorer Sport Trac 2WD	4.0L V6	5330 (z)
Explorer Sport Trac 4WD	4.0L V6	5080 (z)
Expedition 2WD	5.4L V8	6000 (p,z)
Expedition 2WD	5.4L V8	8900 (s,z)
Expedition 4WD	5.4L V8	8600 (s,z)
Excursion 2WD	5.4L V8	6100 (s,z)
Excursion 2WD	5.4L V8	7600 (u,z)
Excursion 2WD	6.8L V10	10,000 (s,z)

Vehicle	Engine	Tow Limit
Excursion 2WD	6.0L V8 TD	11,000 (s,z)
Excursion 4WD	5.4L V8	7200 (u,z)
Excursion 4WD	6.8L V10	9600 (s,z)
Excursion 4WD	6.0L V8 TD	11,000 (s,z)
E-150 Van	4.6L V8	6500 (r)
E-150 Van	5.4L V8	6900 (r)
E-250 Van	4.6L V8	5600 (u)
E-250 Van	5.4L V8	7500 (s)
E-250 Extended Van	4.6L V8	5400 (u)
E-250 Extended Van	5.4L V8	7300 (s)
E-350 Super Duty Van	5.4L V8	7300 (u)
E-350 Super Duty Van	6.8L V10	10,000 (u)
E-350 Super Duty Van	6.0L V8 TD	10,000 (u)
E-350 Super Duty Ext. Van	5.4L V8	7200 (u)
E-350 Super Duty Ext. Van	6.8L V10	10,000 (u)
E-350 Super Duty Ext. Van	6.0L V8 TD	10,000 (u)
E-150 Wagon	4.6L V8	6100 (r)
E-150 Wagon	5.4L V8	6500 (r)
E-350 Super Duty Wagon	5.4L V8	6900 (s)
E-350 Super Duty Wagon	6.8L V10	10,000 (u)
E-350 Super Duty Wagon	6.0L V8 TD	10,000 (u)
E-350 Super Duty Ext. Wagon	5.4L V8	6700 (u)
E-350 Super Duty Ext. Wagon	6.8L V10	10,000 (u)
E-350 Super Duty Ext. Wagon	6.0L V8 TD	10,000 (u)
Freestar	4.2L V6	3500

HONDA

Odyssey	3.5L V6	3500 (z)
Pilot	3.5L V6	3500 (z)
Pilot	3.5L V6	4500 (z,b)

HUMMER

H1 Four-Door Wagon	6.5L V8 TD	7409
H2 SUV	6.0L V8	6700
H2 SUT	6.0L V8	6700

HYUNDAI

Santa Fe 2WD	2.7L V6	3200 (x)
Santa Fe 2WD	3.5L V6	3300 (x)
Santa Fe 4WD	2.7L V6	2700 (x)
Santa Fe 4WD	3.5L V6	2800 (x)

INFINITI

FX35	3.5L V6	3500 (a)
FX45	4.5L V8	3500 (a)
QX56	5.6L V8	8900 (a)

ISUZU

Ascender 7 passenger 2WD	4.2L L6	5000 (q,x,z)
Ascender 7 passenger 2WD	4.2L L6	5500 (s,x,z)
Ascender 7 passenger 2WD	5.3L V8	5900 (q,x,z)
Ascender 7 passenger 2WD	5.3L V8	6600 (s,x,z)
Ascender 7 passenger 4WD	4.2L L6	4800 (q,x,z)
Ascender 7 passenger 4WD	4.2L L6	5300 (s,x,z)
Ascender 7 passenger 4WD	5.3L V8	5700 (q,x,z)
Ascender 7 passenger 4WD	5.3L V8	6200 (s,x,z)
Ascender 5 passenger 2WD	4.2L L6	5300 (q,x,z)
Ascender 5 passenger 2WD	4.2L L6	5800 (s,x,z)
Ascender 5 passenger 4WD	4.2L L6	5100 (q,x,z)
Ascender 5 passenger 4WD	4.2L L6	5600 (s,x,z)



Hummer H2 SUT

2005 TOW RATINGS


Vehicle	Engine	Tow Limit
XC90 2WD	2.5 I5 Turbo	4000
XC90 AWD	Twin Turbo I6	5000
XC90 2WD	Twin Turbo I6	4000

Notes:

- (a) Automatic transmission
- (m) Manual transmission
- (b) Tow rating is for boat trailers only; other ratings apply to travel trailers
- (c) Changes in late-year model reportedly bump rating to 5000 pounds
- (d) Available as a hybrid-powered model with same tow rating
- (x) Trailer brakes required
- (z) Factory towing package required
- (n) 3.21 axle ratio
- (o) 3.23 axle ratio
- (p) 3.31 axle ratio
- (q) 3.42 axle ratio
- (r) 3.55 axle ratio
- (s) 3.73 axle ratio
- (t) 3.92 axle ratio
- (u) 4.10 axle ratio

All tow limits are stated in pounds. Tow ratings for pickups that tow fifth-wheel trailers are higher than those shown here.

These ratings are derived from information supplied by manufacturers at the time of publication and may change as vehicles are further developed during the model year.

See your dealer for more information. 



Toyota Tacoma Access Cab

Get an Accurate Weight

The trick in purchasing the right tow vehicle rests in knowing the precise weight of your boat and trailer when fully loaded. Most people look at the total weight of their boat/trailer and use that figure to calculate how much their tow vehicle needs to pull. Wrong! You must also add the weight of everything you bring along, including fluids (such as gasoline), gear and toys. This can easily add 500 to 1000 pounds to your towed weight, so your 6000-pound boat/trailer actually weighs 6500 to 7000 pounds traveling down the road.

The only sure way to get an accurate weight is to take your rig to a public truck scale. When at the scale, be sure to record its tongue weight, too. Most auto manufacturers stipulate that tongue weight should not exceed 10 to 15 percent of a loaded trailer's weight, although the figure for boat trailers — 5 to 8 percent — is even less. When you exceed the maximum tongue weight, you may exceed the tow vehicle's rear Gross Axle Weight Rating (GAWR). This can lead to premature wear of the rear-end, wheel bearings and tires. It can also make the vehicle dangerous to drive by upsetting the suspension's dynamic balance.

When choosing a tow vehicle, be aware that most maximum tow ratings only include the weight of the driver. If you bring along the family, you must subtract their weight from the vehicle's Gross Trailer Weight Rating (GTWR), and stay within the vehicle's Gross Combined Weight Rating (GCWR), which is defined as the total weight of the loaded vehicle and boat/trailer combination — including all passengers, gear, fuel and other fluids.

Bottom line? Don't underestimate your towing requirements, and you'll make a much better decision when buying your next tow vehicle.

Robert Eckhardt

2005 STATE TOW LAWS

Although some are content to boat in home waters and never trailer across state lines, others are more adventurous and love to take their craft to new locations. The beauty of trailer boating is, after all, being able to go where our whims take us. It's all the more important, then, to keep abreast of trailering laws.

Not only do tow laws vary by state, but sometimes boaters are caught off guard when their home-state regulations change. One area that begs scrutiny, for example, is the threshold trailer weight at which trailer brakes are legally required.

While the following is a guideline of 2005 towing laws¹ for each state, it's advisable to contact state or provincial motor vehicle departments for specifics on each area you plan to travel through. You should also be aware that while our chart lists maximum towing speeds, these generally apply only to major highways. *Editors*

¹ Source: 2005 Digest of Motor Laws, American Automobile Association

State	Max. Towing Speed (mph)	Max. Trailer Length	Max. Trailer Width	Max. Trailer Height	Max. Overall Length	Weight Requiring Trailer Brakes (lbs.)
Alabama	70	40'	8'	13' 6"	57'	3000
Alaska	55	40'	8' 6"	14'	75'	5000
Arizona	55	40'	8'	13' 6"	65'	3000
Arkansas	65	53' 6"	8' 6"	13' 6"	65'	3000
California	55	40'	8' 6"	14'	65'	3000 ¹
Colorado	65	45'	8' 6"	14' 6"	70'	3000
Connecticut	65	45'	8' 6"	13' 6"	60'	3000
Delaware	55	40'	8' 6"	13' 6"	65'	N/A
Dist. of Columbia	55	60'	8'	13' 6"	85'	3000
Florida	65	40'	8' 6"	13' 6"	65'	3000
Georgia	55	N/A	8' 6"	13' 6"	60'	3000
Hawaii	55	40'	9'	14'	65'	3000
Idaho	65	48'	8' 6"	14'	75'	1500
Illinois	55	60'	8'	13' 6"	65'	3000
Indiana	55	40'	8' 6"	13' 6"	65'	3000
Iowa	65	48'	8'	14'	70'	3000
Kansas	55	45'	8' 6"	14'	65'	N/A
Kentucky	65	N/A	8'	13' 6"	65'	N/A
Louisiana	70	40'	8'	13' 6"	70'	3000
Maine	55	48'	8' 6"	13' 6"	65'	3000
Maryland	65	40'	8' 6"	13' 6"	55'	3000
Massachusetts	65	40'	8' 6"	13' 6"	65'	N/A
Michigan	55	45'	8' 6"	13' 6"	65'	3000
Minnesota	70	45'	8' 6"	13' 6"	60'	3000
Mississippi	55	40'	8' 6"	13' 6"	53'	2000
Missouri	70	N/A	8'	13' 6"	55'	N/A
Montana	65	N/A	8' 6"	14'	65'	3000
Nebraska	65	40'	8' 6"	14' 6"	65'	3000
Nevada	65	N/A	8'	14'	70'	3000
New Hampshire	55	48'	8' 6"	13' 6"	N/A	N/A
New Jersey	65	40'	8' 6"	13' 6"	50'	N/A
New Mexico	75	40'	8' 6"	14'	75'	3000
New York	65	48'	8'	13' 6"	65'	3000
North Carolina	55	35'	8'	13' 6"	60'	4000
North Dakota	70	53'	8' 6"	14'	75'	N/A
Ohio	55	40'	8' 6"	13' 6"	65'	2000
Oklahoma	65	40'	8' 6"	13' 6"	65'	3000
Oregon	55	45'	8' 6"	14'	65'	N/A
Pennsylvania	55	53'	8' 6"	13' 6"	60'	3000
Rhode Island	65	48' 6"	8' 6"	13' 6"	60'	4000
South Carolina	55	48'	8' 6"	13' 6"	N/A	3000
South Dakota	65	53'	8' 6"	14'	80'	3000
Tennessee	70	48'	8' 6"	13' 6"	65'	3000
Texas	70	N/A	8' 6"	13' 6"	65'	4500
Utah	65	40'	8' 6"	14'	65'	N/A
Vermont	65	45'	8' 6"	13' 6"	65'	3000
Virginia	55	45'	8' 6"	13' 6"	65'	3000
Washington	60	48'	8' 6"	14'	60'	3000
West Virginia	65	40'	8'	13' 6"	75'	3000
Wisconsin	65	48'	8' 6"	13' 6"	60'	3000
Wyoming	65	45'	8' 6"	14'	65'	N/A

¹Limit for trailer coaches and camp trailers is 1500 pounds.